

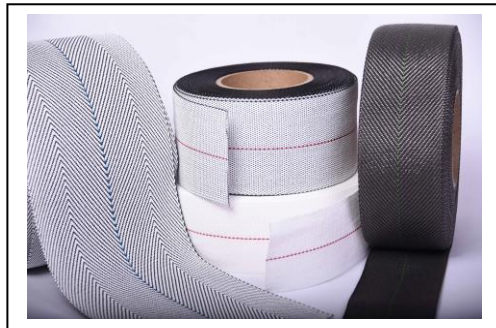


**Agri-Equipment Intl. DBA Breeders Poultry Belts**

11 Barkingham Ln., Unit D | Greenville, SC 29607

843-399-2008 | [jgroh@breederspoultrybelts.com](mailto:jgroh@breederspoultrybelts.com)

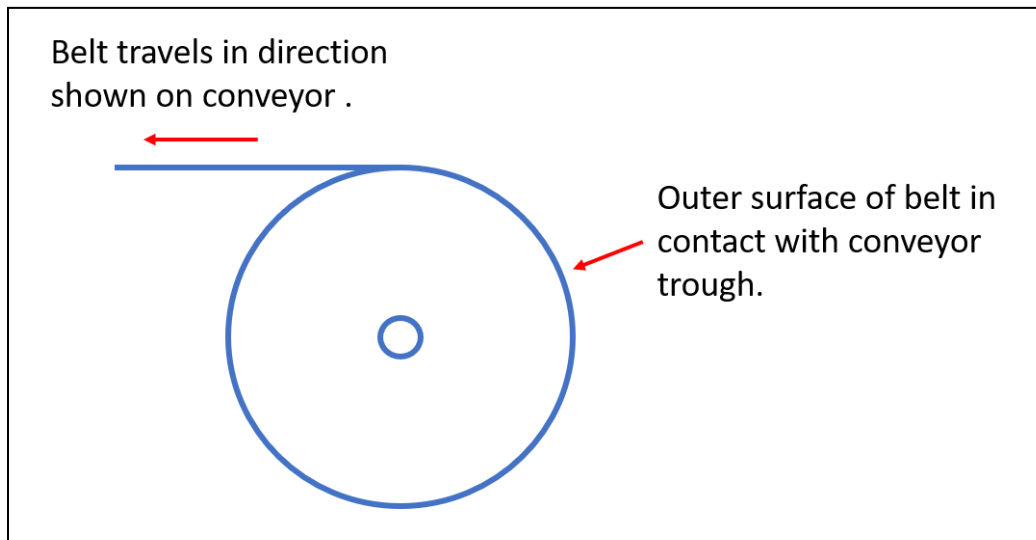
**Woven Polypropylene Egg Belt Installation Instructions**



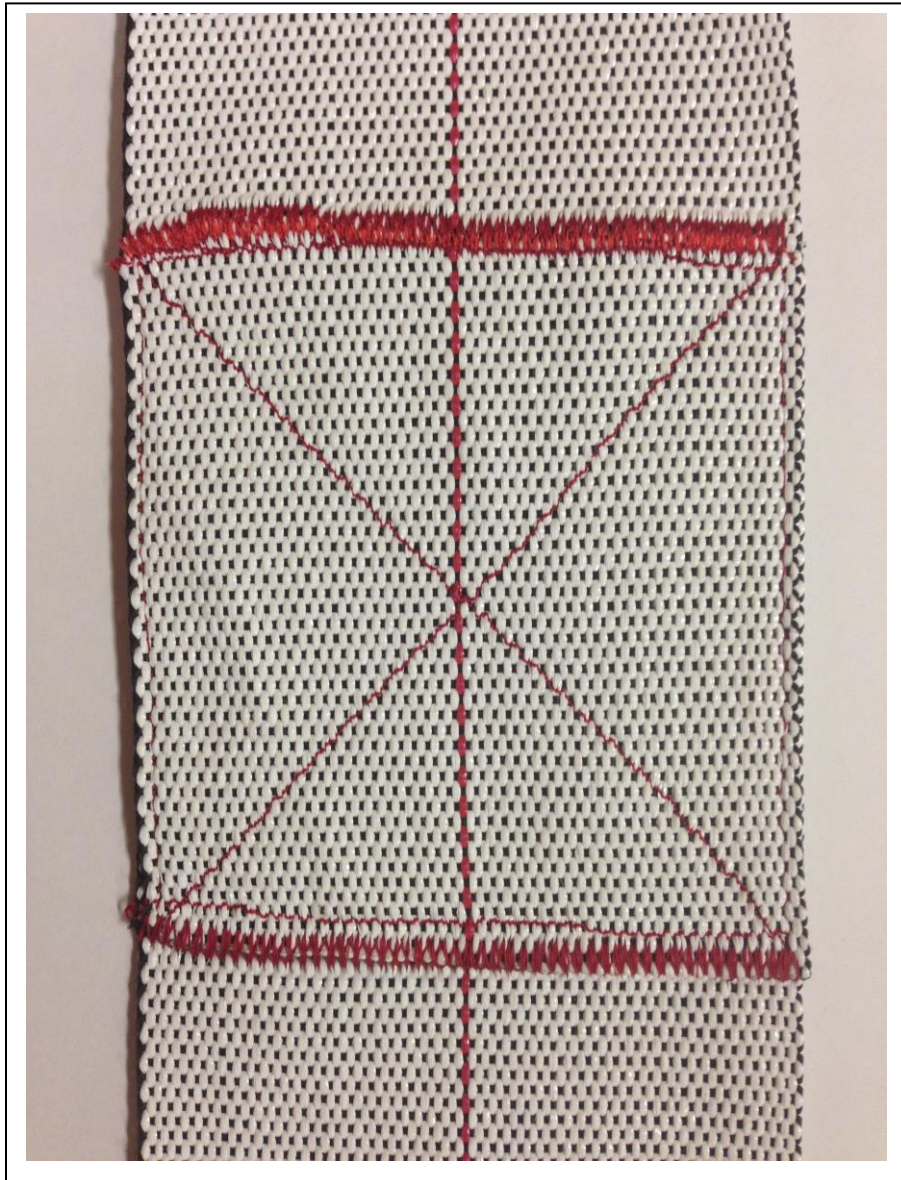
Congratulations on purchasing the highest quality woven polypropylene egg belts available! Proper installation will ensure that your belts perform to your expectations and minimize maintenance costs, providing a high value-in-use.

It is recommended that you install the belts as follows:

- Remove the belts from the pallet and inspect for damage.
- Follow any guidelines from your equipment manufacturer concerning proper installation and adjustment of drive components.
- Belts should be installed by a skilled qualified installer. It is recommended that the belt be fed through the bottom return of the conveyor with the roll oriented as shown below. This means that the outer surface of the roll will be in contact with the conveyor trough and moves in the direction to the drive roller as shown.



- You can expect the belts to stretch under load and will stabilize dimensionally after about 30 days. Under full load, this will be about 2.5% of the total length. Once stable, they will oscillate about 0.5% of total length from full load (belts loaded with eggs and in operation) to low load (not in operation, and under spring tension of system; typically 25-50 lb. depending on manufacturer).
- After initial installation, you will need to remove excess belt as necessary as the belt stabilizes and re-sew the seam. This will also be dependent on the design of your systems belt take-up mechanism.
- It is recommended that the belt seams be sewn in the pattern as illustrated in the photo below. You should overlap the seams at least equivalent to the width of the belt. Sew along the edges and across the width at both seams creating a box seam, and then an "X" from the four corners of the box seam. Note that it is recommended to also sew across the seams to entirely secure the edges:



- The seams can be sewn by hand using a #3-14 gauge bent egg sewing needle and 277 nylon beeswax coated thread (see photo below). Alternatively, you can use an industrial sewing machine, a [Speedy Stitcher](#) sewing awl, or an ultrasonic welder (see <https://www.breederspoultrybelts.com/installation>).



#3-14 gauge bent egg sewing needle and 24 yd. roll of 277 beeswax coated Nylon sewing thread. To purchase, contact Breeders Poultry Belts.



The Speedy Stitcher sewing awl is ideal for hand-sewing stiff and heavy materials. Available online at [Amazon](https://www.amazon.com).